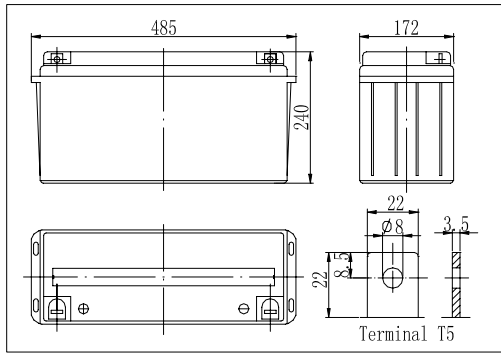


Dimensions

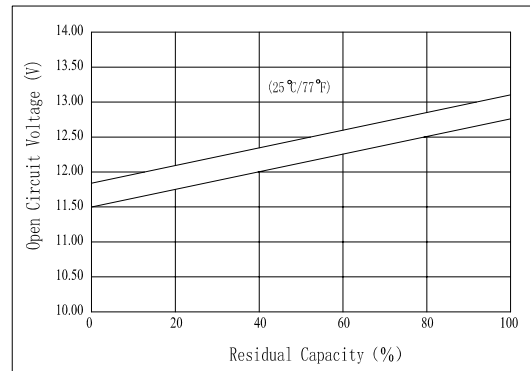


Specifications

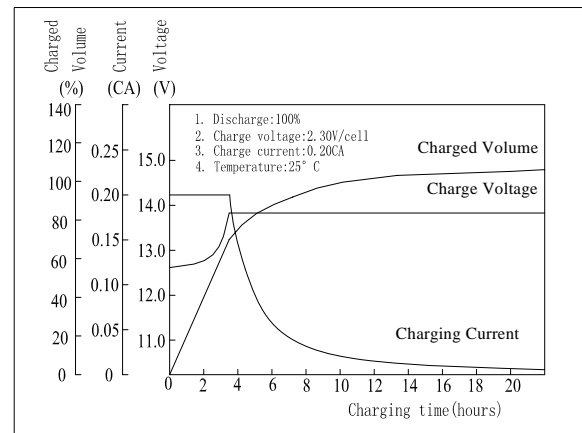
Nominal Voltage		12 V
Capacity(10HR, 25°C)		150 Ah
Dimension	Length	485mm (19.09inch)
	Width	172mm (6.77inch)
	Height	240mm (9.45inch)
	Total Height	240mm (9.45inch)
Approx. Weight		47.5kg (104.7lbs)
Internal resistance (Fully charged, 25°C)		Approx. 3.9m Ω
Capacity affected by temperature (10HR)	40°C	102%
	25°C	100%
	0°C	85%
	-15°C	65%
Self-discharge (25°C)	3 month	Remaining Capacity: 91%
	6 month	Remaining Capacity: 82%
	12 month	Remaining Capacity: 65%
Nominal operating temperature		25°C ± 3°C (77°F ± 5°F)
Operating temperature range		-15°C ~ 50°C (5°F ~ 122°F)
Float charging voltage(25°C)		13.50 to 13.80V
Cyclic charging voltage(25°C)		14.10 to 14.40V
Maximum charging current		37.5A
Terminal material		Copper
Maximum discharge current		1200A(5 sec.)

- ◆ Gelled electrolyte technology;
- ◆ AGM separator;
- ◆ Recognized by UL & CE;
- ◆ ABS container.

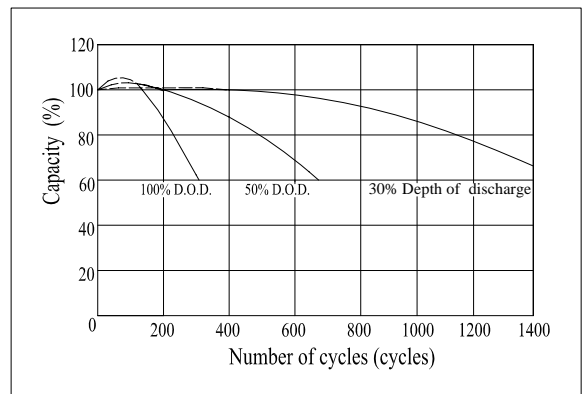
The Relationship for Open Circuit Voltage and Residual Capacity (25°C)



Charging Characteristics(25°C)



Cycle Life(25°C)



Note: Floating life at 20°C designed for 12 years.

Constant Current Discharge Characteristics (A, 25°C)

F.V/TIME	5min	10min	15min	30min	60min	3h	5h	10h	20h
9.60V	324	248	228	147	93.0	36.5	25.0	15.2	7.84
10.2V	308	235	219	141	89.3	36.0	24.6	15.1	7.77
10.8V	289	221	208	134	84.8	35.3	24.1	15.0	7.73

Constant Power Discharge Characteristics (Watt, 25°C)

F.V/TIME	5min	10min	15min	30min	60min	3h	5h	10h	20h
9.60V	3402	2673	2503	1649	1060	430	295	182	94.1
10.2V	3232	2539	2403	1583	1018	423	291	180	93.3
10.8V	3038	2387	2283	1504	967	415	285	179	92.7

Note: we can produce other type gelled batteries according with clients requirements.