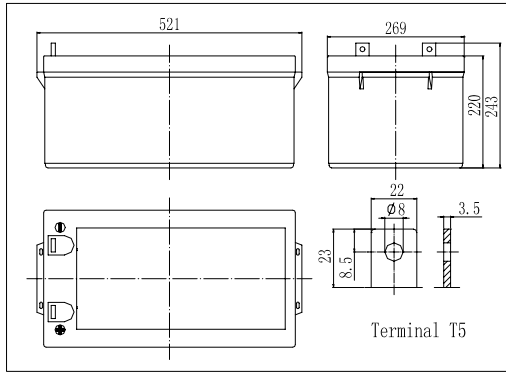
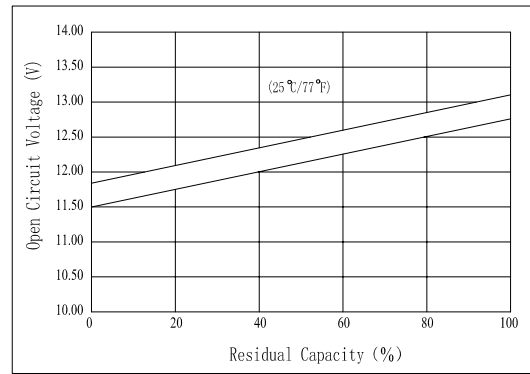


Dimensions



The Relationship for Open Circuit Voltage and Residual Capacity (25°C)

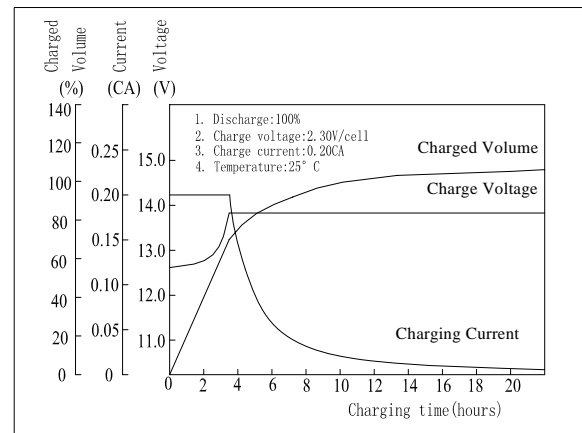


Specifications

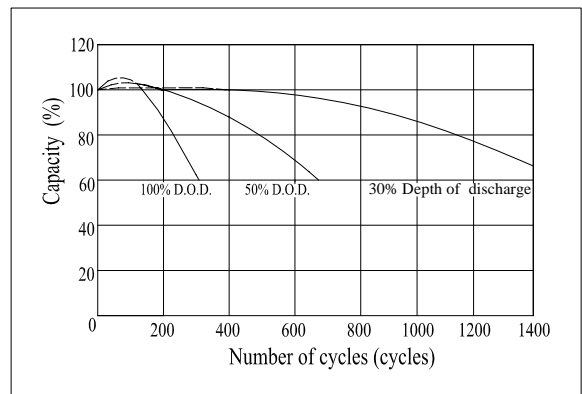
Nominal Voltage		12 V
Capacity(10HR, 25°C)		250 Ah
Dimension	Length	521mm (20.5inch)
	Width	269mm (10.6inch)
	Height	220mm (8.66inch)
	Total Height	242mm (9.53inch)
Approx. Weight		79kg (174.2lbs)
Internal resistance (Fully charged, 25°C)		Approx. 2.9mΩ
Capacity affected by temperature (10HR)	40°C	102%
	25°C	100%
	0°C	85%
	-15°C	65%
Self-discharge (25°C)	3 month	Remaining Capacity: 91%
	6 month	Remaining Capacity: 82%
	12 month	Remaining Capacity: 65%
Nominal operating temperature		25°C ± 3°C (77°F ± 5°F)
Operating temperature range		-15°C ~ 50°C (5°F ~ 122°F)
Float charging voltage(25°C)		13.50 to 13.80V
Cyclic charging voltage(25°C)		14.10 to 14.40V
Maximum charging current		62.5A
Terminal material		Copper
Maximum discharge current		1800A(5 sec.)

- ◆ Gelled electrolyte technology;
- ◆ AGM separator;
- ◆ Recognized by UL & CE;
- ◆ ABS container.

Charging Characteristics(25°C)



Cycle Life (25°C)



Note: Floating life at 20°C designed for 12 years.

Constant Current Discharge Characteristics (A, 25°C)

F.V/TIME	5min	10min	15min	30min	60min	3h	5h	10h	20h
9.60V	540	413	380	245	155	60.9	41.6	25.4	13.1
10.2V	513	392	365	235	149	60.0	41.0	25.2	13.0
10.8V	482	368	347	223	141	58.8	40.2	25.0	12.9

Constant Power Discharge Characteristics (Watt, 25°C)

F.V/TIME	5min	10min	15min	30min	60min	3h	5h	10h	20h
9.60V	5670	4455	4172	2749	1767	716	492	303	157
10.2V	5387	4232	4006	2639	1696	706	485	300	155
10.8V	5063	3978	3805	2507	1612	691	475	299	155

Note: we can produce other type gelled batteries according with clients requirements.