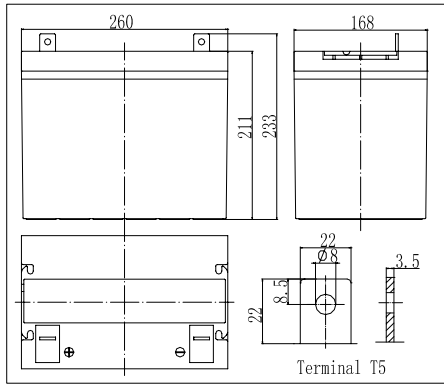
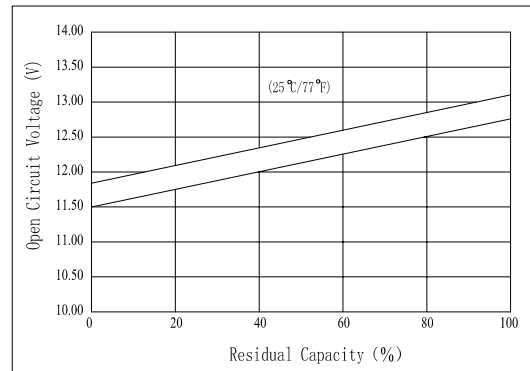


Dimensions



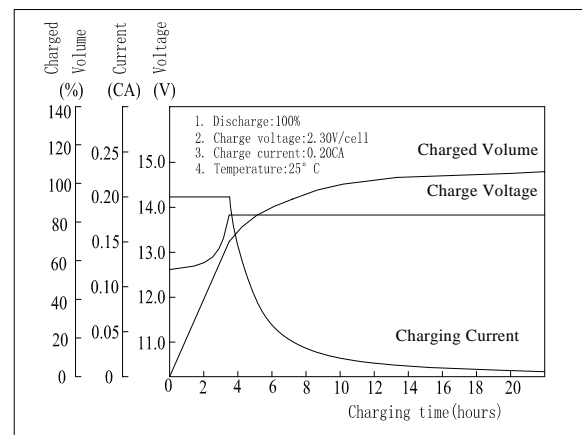
The Relationship for Open Circuit Voltage and Residual Capacity (25°C)



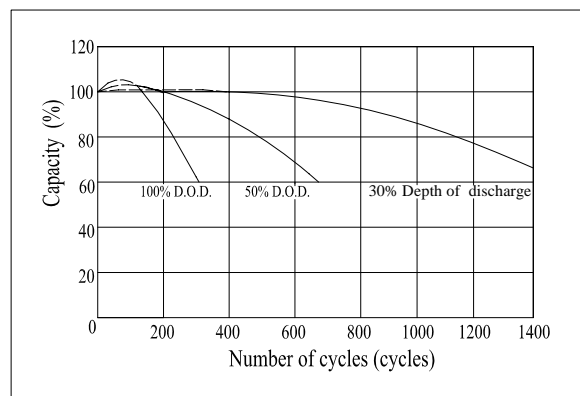
Specifications

Nominal Voltage		12 V
Capacity(10HR, 25°C)		70Ah
Dimension	Length	260mm (10.24inch)
	Width	168mm (6.61inch)
	Height	211mm (8.31inch)
	Total Height	233mm (9.17inch)
Approx. Weight		24.5kg (50.0lbs)
Internal resistance (Fully charged, 25°C)		Approx.5.8m Ω
Capacity affected by temperature (10HR)	40°C	102%
	25°C	100%
	0°C	85%
	-15°C	65%
Self-discharge (25°C)	3 month	Remaining Capacity: 91%
	6 month	Remaining Capacity: 82%
	12 month	Remaining Capacity: 65%
Nominal operating temperature		25°C ± 3°C (77°F ± 5°F)
Operating temperature range		-15°C ~ 50°C (5°F ~ 122°F)
Float charging voltage(25°C)		13.50 to 13.80V
Cyclic charging voltage(25°C)		14.10 to 14.40V
Maximum charging current		17.5A
Terminal material		Copper
Maximum discharge current		700A(5 sec.)

Charging Characteristics(25°C)



Cycle Life (25°C)



Note: Floating life at 20°C designed for 12 years.

- ◆ Gelled electrolyte technology;
- ◆ AGM separator;
- ◆ Recognized by UL & CE;
- ◆ ABS container.

Constant Current Discharge Characteristics (A, 25°C)

F.V/TIME	5min	10min	15min	30min	60min	3h	5h	10h	20h
9.60V	151	116	106	68.6	43.4	17.1	11.7	7.11	3.66
10.2V	144	110	102	65.9	41.7	16.8	11.5	7.04	3.63
10.8V	135	103	97.0	62.6	39.6	16.5	11.3	7.00	3.61

Constant Power Discharge Characteristics (Watt, 25°C)

F.V/TIME	5min	10min	15min	30min	60min	3h	5h	10h	20h
9.60V	1588	1247	1168	770	495	201	138	84.8	43.9
10.2V	1508	1185	1122	739	475	198	136	84.1	43.5
10.8V	1418	1114	1065	702	451	194	133	83.6	43.3

Note: we can produce other type gelled batteries according with clients requirements.