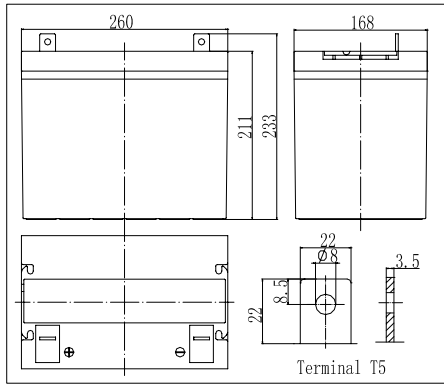
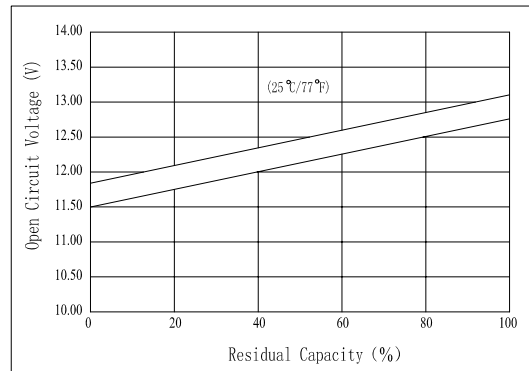


Dimensions



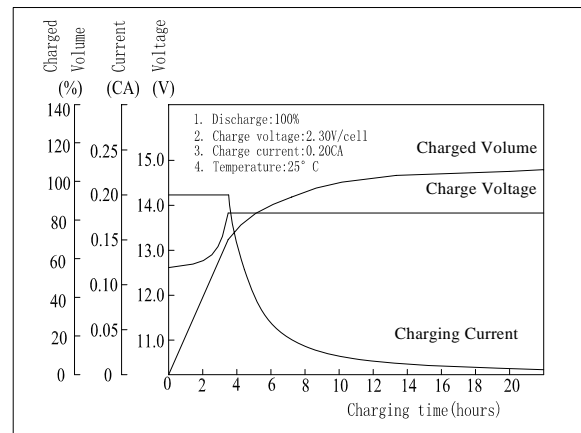
The Relationship for Open Circuit Voltage and Residual Capacity (25°C)



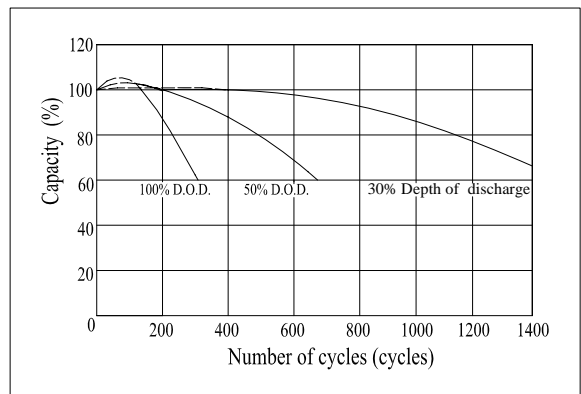
Specifications

| | | |
|---|--------------|----------------------------|
| Nominal Voltage | | 12 V |
| Capacity(10HR, 25°C) | | 80 Ah |
| Dimension | Length | 260mm (10.24inch) |
| | Width | 168mm (6.61inch) |
| | Height | 211mm (8.31inch) |
| | Total Height | 233mm (9.17inch) |
| Approx. Weight | | 26kg (57.3lbs) |
| Internal resistance (Fully charged, 25°C) | | Approx.6m Ω |
| Capacity affected by temperature (10HR) | 40°C | 102% |
| | 25°C | 100% |
| | 0°C | 85% |
| | -15°C | 65% |
| Self-discharge (25°C) | 3 month | Remaining Capacity: 91% |
| | 6 month | Remaining Capacity: 82% |
| | 12 month | Remaining Capacity: 65% |
| Nominal operating temperature | | 25°C ± 3°C (77°F ± 5°F) |
| Operating temperature range | | -15°C ~ 50°C (5°F ~ 122°F) |
| Float charging voltage(25°C) | | 13.50 to 13.80V |
| Cyclic charging voltage(25°C) | | 14.10 to 14.40V |
| Maximum charging current | | 20A |
| Terminal material | | Copper |
| Maximum discharge current | | 800A(5 sec.) |

Charging Characteristics(25°C)



Cycle Life (25°C)



Note: Floating life at 20°C designed for 12 years.

- ◆ Gelled electrolyte technology;
- ◆ AGM separator;
- ◆ Recognized by UL & CE;
- ◆ ABS container.

Constant Current Discharge Characteristics (A, 25°C)

| F.V/TIME | 5min | 10min | 15min | 30min | 60min | 3h | 5h | 10h | 20h |
|----------|------|-------|-------|-------|-------|------|-------|------|------|
| 9.60V | 173 | 132 | 122 | 78.4 | 49.6 | 19.5 | 13.32 | 8.12 | 4.18 |
| 10.2V | 164 | 125 | 117 | 75.3 | 47.6 | 19.2 | 13.12 | 8.05 | 4.14 |
| 10.8V | 154 | 118 | 111 | 71.5 | 45.2 | 18.8 | 12.86 | 8.00 | 4.12 |

Constant Power Discharge Characteristics (Watt, 25°C)

| F.V/TIME | 5min | 10min | 15min | 30min | 60min | 3h | 5h | 10h | 20h |
|----------|------|-------|-------|-------|-------|-----|-----|------|------|
| 9.60V | 1814 | 1426 | 1335 | 880 | 565 | 229 | 157 | 97.0 | 50.2 |
| 10.2V | 1724 | 1354 | 1282 | 844 | 543 | 226 | 155 | 96.1 | 49.7 |
| 10.8V | 1620 | 1273 | 1218 | 802 | 516 | 221 | 152 | 95.5 | 49.4 |

Note: we can produce other type gelled batteries according with clients requirements.