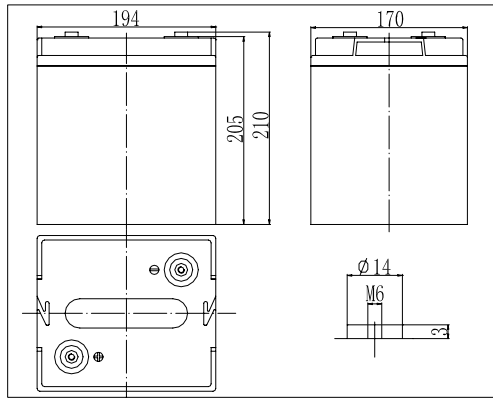
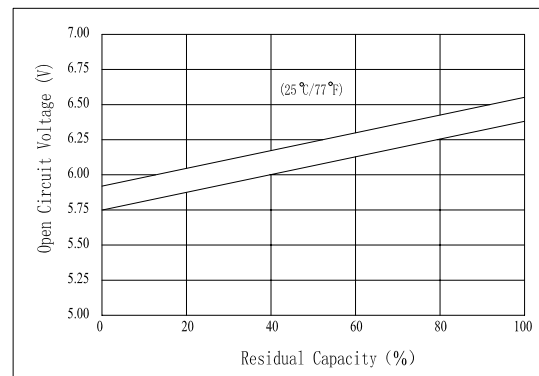


Dimensions



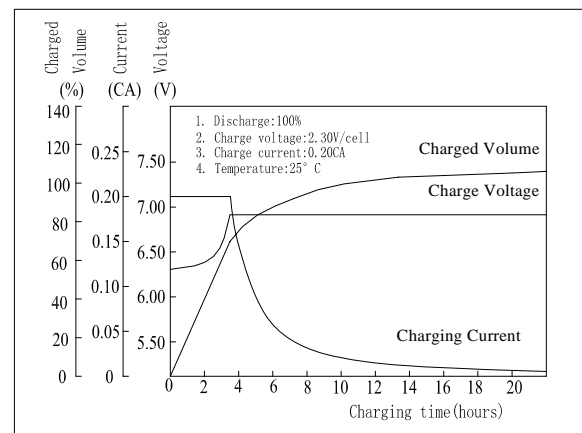
The Relationship for Open Circuit Voltage and Residual Capacity (25°C)



Specifications

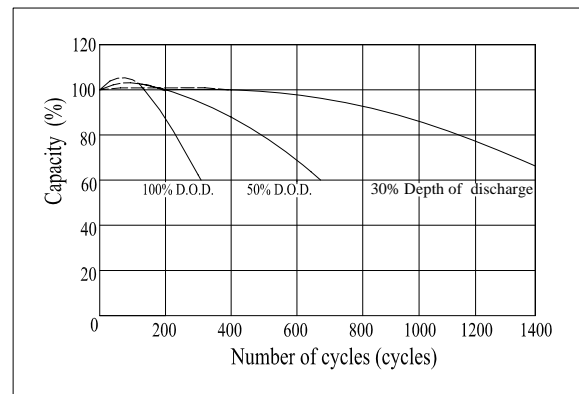
Nominal Voltage		6 V
Capacity(10HR, 25°C)		100 Ah
Dimension	Length	194mm (7.64inch)
	Width	170mm (6.69inch)
	Height	205mm (8.07inch)
	Total Height	210mm (8.27inch)
Approx. Weight		16.8kg (37.0lbs)
Internal resistance (Fully charged, 25°C)		Approx. 3.9mΩ
Capacity affected by temperature (10HR)	40°C	102%
	25°C	100%
	0°C	85%
	-15°C	65%
Self-discharge (25°C)	3 month	Remaining Capacity: 91%
	6 month	Remaining Capacity: 82%
	12 month	Remaining Capacity: 65%
Nominal operating temperature		25°C ± 3°C (77°F ± 5°F)
Operating temperature range		-15°C ~ 50°C (5°F ~ 122°F)
Float charging voltage(25°C)		6.75 to 6.90V
Cyclic charging voltage(25°C)		7.05 to 7.20
Maximum charging current		25A
Terminal material		Copper
Maximum discharge current		800A(5 sec.)

Charging Characteristics(25°C)



- ◆ Gelled electrolyte technology;
- ◆ AGM separator;
- ◆ Recognized by UL & CE;
- ◆ ABS container.

Cycle Life(25°C)



Note: Floating life at 20°C designed for 12 years.

Constant Current Discharge Characteristics (A, 25°C)

F.V/TIME	5min	10min	15min	30min	60min	3h	5h	10h	20h
4.80V	216	165	152	98	62.0	24.4	16.6	10.2	5.23
5.10V	205	157	146	94	59.5	24.0	16.4	10.1	5.18
5.40V	193	147	139	89	56.5	23.5	16.1	10.0	5.15

Constant Power Discharge Characteristics (Watt, 25°C)

F.V/TIME	5min	10min	15min	30min	60min	3h	5h	10h	20h
4.80V	1134	891	834	550	353	143	98	61	31.4
5.10V	1077	846	801	528	339	141	97	60	31.1
5.40V	1013	796	761	501	322	138	95	60	30.9

Note: we can produce other type gelled batteries according with clients requirements.