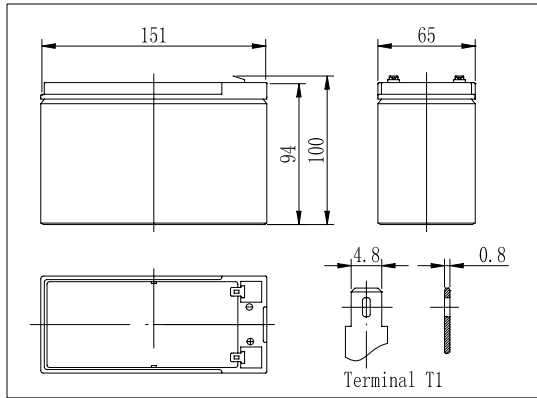


Dimensions



Specifications

Nominal Voltage	12 V	
Capacity(20HR, 25°C)	8.5Ah	
Dimension	Length	151mm (5.94inch)
	Width	65mm (2.56inch)
	Height	94mm (3.70inch)
	Total Height	100mm (3.94inch)
Approx. Weight	2.45kg (5.40lbs)	
Internal resistance (Fully charged, 25°C)	Approx. 20mΩ	
Capacity affected by temperature (20HR)	40°C	102%
	25°C	100%
	0°C	85%
	-15°C	65%
Self-discharge (25°C)	3 month	Remaining Capacity: 91%
	6 month	Remaining Capacity: 82%
	12 month	Remaining Capacity: 65%
Nominal operating temperature	25°C ± 3°C (77°F ± 5°F)	
Operating temperature range	-15°C ~ 50°C (5°F ~ 122°F)	
Float charging voltage(25°C)	13.60 to 13.80V	
Cyclic charging voltage(25°C)	14.50 to 14.90V	
Maximum charging current	2.55A	
Terminal material	Copper	
Maximum discharge current	127.5A(5 sec.)	

- ◆ Absorbent glass mat technology;
- ◆ Recognized by UL & CE;
- ◆ ABS container.

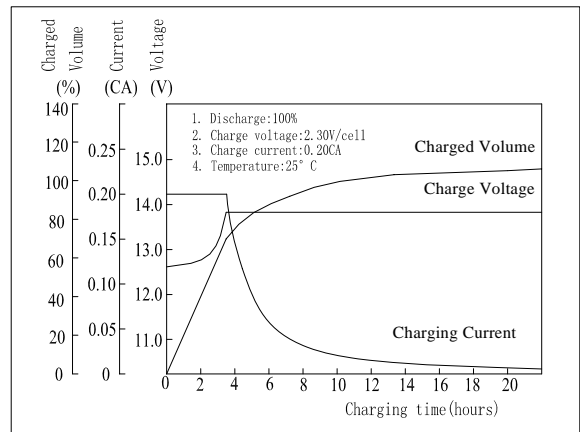
Constant Current Discharge Characteristics (A, 25°C)

F.V/TIME	5min	10min	15min	30min	60min	3h	5h	10h	20h
9.60V	33.0	21.5	16.0	9.35	5.50	2.13	1.36	0.77	0.43
10.2V	31.4	20.4	15.4	8.98	5.28	2.10	1.34	0.76	0.42
10.8V	29.5	19.2	14.6	8.53	5.02	2.06	1.31	0.76	0.42

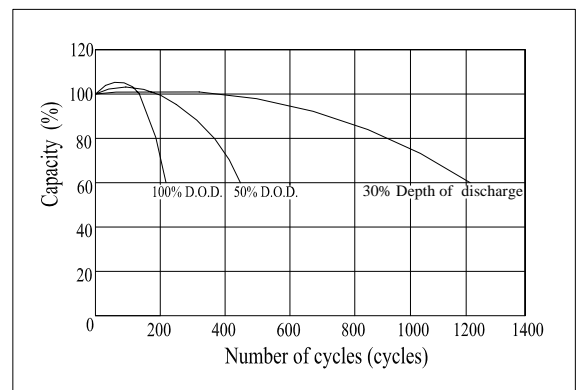
Constant Power Discharge Characteristics (Watt, 25°C)

F.V/TIME	5min	10min	15min	30min	60min	3h	5h	10h	20h
9.60V	368	243	182	107	63.7	25.3	16.2	9.26	5.12
10.2V	350	230	175	103	61.1	24.9	16.0	9.17	5.07
10.8V	329	217	166	97.7	58.1	24.4	15.7	9.17	5.04

Charging Characteristics(25°C)



Cycle Life(25°C)



Note: Floating life at 20°C designed for 3 to 5 years.