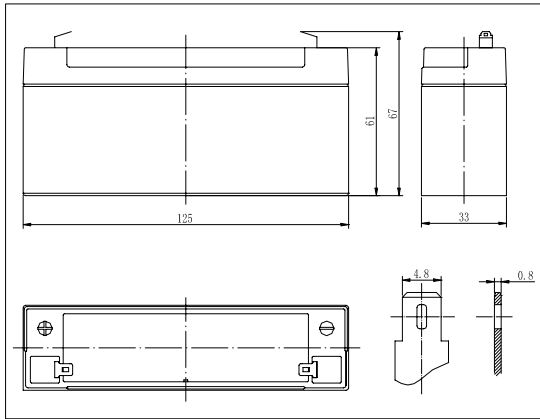
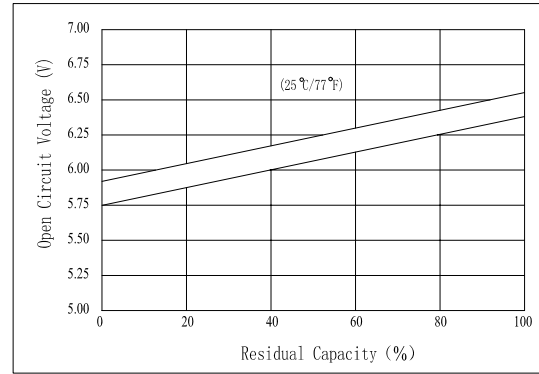


**Dimensions**



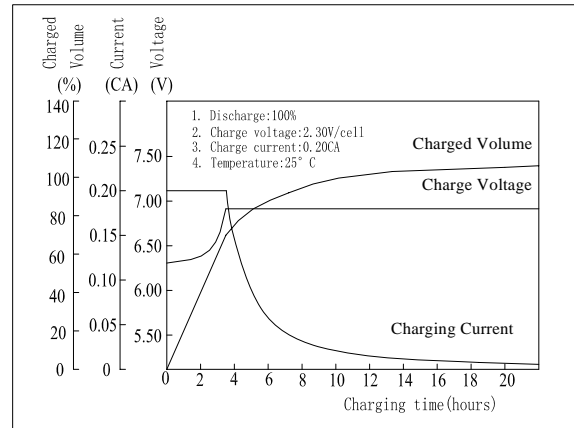
**The Relationship for Open Circuit Voltage and Residual Capacity (25°C)**



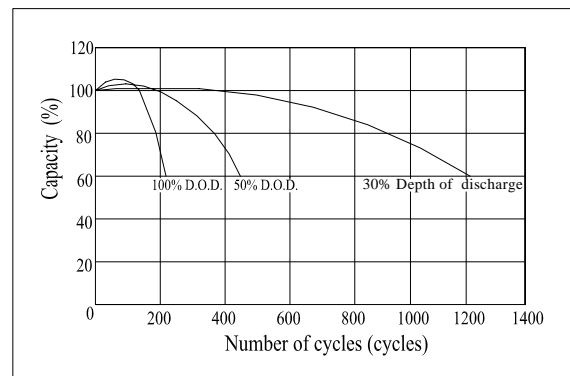
**Specifications**

Nominal Voltage	6 V	
Capacity(20HR, 25°C)	3.2Ah	
Dimension	Length	125mm (4.92inch)
	Width	33mm (1.30inch)
	Height	61mm (2.40inch)
	Total Height	67mm (2.64inch)
Approx. Weight	0.63kg (1.39lbs)	
Internal resistance (Fully charged, 25°C)	Approx. 30mΩ	
Capacity affected by temperature (20HR)	40°C	102%
	25°C	100%
	0°C	85%
	-15°C	65%
Self-discharge (25°C)	3 month	Remaining Capacity: 91%
	6 month	Remaining Capacity: 82%
	12 month	Remaining Capacity: 65%
Nominal operating temperature	25°C ± 3°C (77°F ± 5°F)	
Operating temperature range	-15°C ~ 50°C (5°F ~ 122°F)	
Float charging voltage(25°C)	6.80 to 6.90V	
Cyclic charging voltage(25°C)	7.25 to 7.45V	
Maximum charging current	0.96A	
Terminal material	Copper	
Maximum discharge current	48A(5 sec.)	

**Charging Characteristics(25°C)**



**Cycle Life(25°C)**



Note: Floating life at 20°C designed for 3 to 5 years.

- ◆ Absorbent glass mat technology;
- ◆ Recognized by UL & CE;
- ◆ ABS container.

**Constant Current Discharge Characteristics (A, 25°C)**

F.V/TIME	5min	10min	15min	30min	60min	3h	5h	10h	20h
4.80V	11.8	7.36	5.76	3.46	1.98	0.76	0.54	0.30	0.16
5.10V	11.2	6.99	5.53	3.32	1.90	0.75	0.53	0.29	0.16
5.40V	10.6	6.57	5.25	3.15	1.81	0.74	0.52	0.29	0.16

**Constant Power Discharge Characteristics (Watt, 25°C)**

F.V/TIME	5min	10min	15min	30min	60min	3h	5h	10h	20h
4.80V	66.1	41.5	32.8	19.8	11.5	4.53	3.20	1.77	0.97
5.10V	62.8	39.4	31.5	19.0	11.0	4.47	3.15	1.76	0.97
5.40V	59.0	37.1	29.9	18.1	10.5	4.38	3.09	1.76	0.96