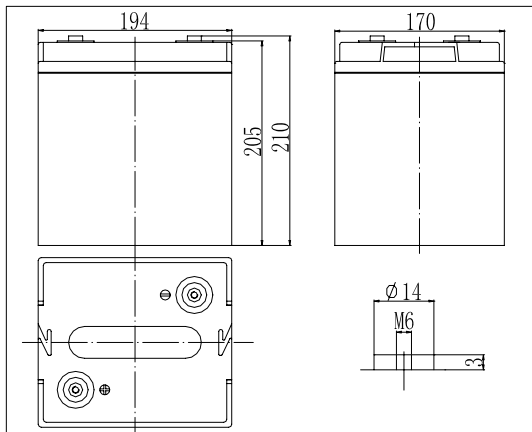


Dimensions**Specifications**

Nominal Voltage		6 V
Capacity(10HR, 25°C)		100 Ah
Dimension	Length	194mm (7.64inch)
	Width	170mm (6.69inch)
	Height	205mm (8.07inch)
	Total Height	210mm (8.27inch)
Approx. Weight		16.5kg (36.4lbs)
Internal resistance (Fully charged, 25°C)		Approx. 3.5m Ω
Capacity affected by temperature (10HR)	40°C	102%
	25°C	100%
	0°C	85%
	-15°C	65%
Self-discharge (25°C)	3 month	Remaining Capacity: 91%
	6 month	Remaining Capacity: 82%
	12 month	Remaining Capacity: 65%
Nominal operating temperature		25°C ± 3°C (77°F ± 5°F)
Operating temperature range		-15°C ~ 50°C (5°F ~ 122°F)
Float charging voltage(25°C)		6.75 to 6.90V
Cyclic charging voltage(25°C)		7.25 to 7.45V
Maximum charging current		30A
Terminal material		Copper
Maximum discharge current		800A(5 sec.)

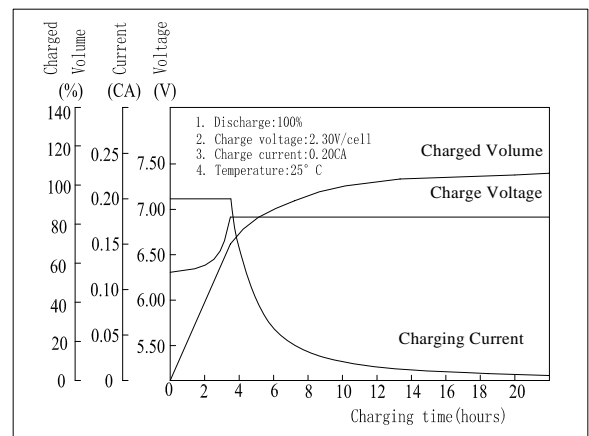
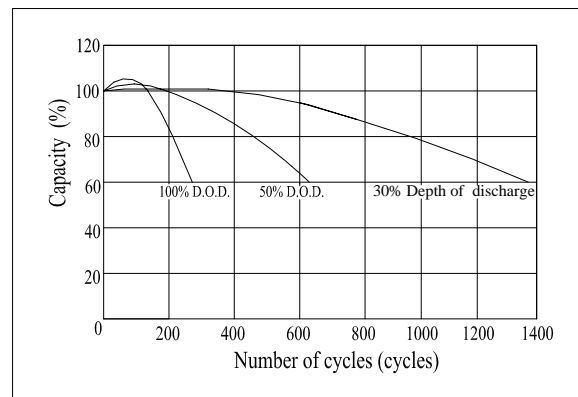
- ◆ Absorbent glass mat technology;
- ◆ Recognized by UL & CE;
- ◆ ABS container.

Constant Current Discharge Characteristics (A, 25°C)

F.V/TIME	5min	10min	15min	30min	60min	3h	5h	10h	20h
4.80V	337	235	182	111	66.7	26.4	18.5	10.2	5.28
5.10V	320	223	175	107	64.0	26.0	18.2	10.1	5.23
5.40V	301	209	166	101	60.8	25.5	17.8	10.0	5.20

Constant Power Discharge Characteristics (Watt, 25°C)

F.V/TIME	5min	10min	15min	30min	60min	3h	5h	10h	20h
4.80V	1769	1269	999	623	380	155	109	60.6	31.7
5.10V	1681	1206	959	598	365	153	108	60.1	31.4
5.40V	1580	1133	911	568	347	150	105	60.1	31.2

Charging Characteristics(25°C)**Cycle Life(25°C)**

Note: Floating life at 20°C designed for 7 to 10 years.